

Northwest County

Area Background

The Northwest County (“Northwest County”) planning area covers over 2,500 square miles of Clark County—west of the Northeast planning area, the City of Las Vegas, the Lone Mountain planning area, and the Summerlin South planning area, and north of the South County planning area.

Northwest County encompasses the unincorporated communities of Indian Springs, Lower Kyle Canyon, Mount Charleston, Mountain Springs, and Blue Diamond. The planning area also surrounds the Las Vegas Indian Colony (home of the Las Vegas Paiute). Outside of these (and other) small communities, Northwest County is made up of vast swaths of federally owned and managed land. Desert National Wildlife Range (NWR), Nevada Test and Training Range (NTTR), the Toiyabe National Forest (including the Spring Mountains NRA), the Red Rock Canyon NRA, and large area under BLM ownership dedicated to recreation and conservation.

Area Character

Northwest County is rural in character with no incorporated cities, relatively small unincorporated communities, and a significant portion of all land is under public ownership and management. The planning area is incredibly diverse in climate and geography, including the alpine environment of Mount Charleston and the Spring Mountain range and the surrounding desert. The communities within Northwest County are equally diverse. Desert communities like Cactus Springs, Indian Springs, and Corn Creek are isolated by distance from the Las Vegas Valley while mountain and foothill communities like Cold Creek, Mountain Springs, Blue Diamond, and Lower Kyle Canyon are more accessible from the Las Vegas Valley—and experience different development pressures and impacts as a result.

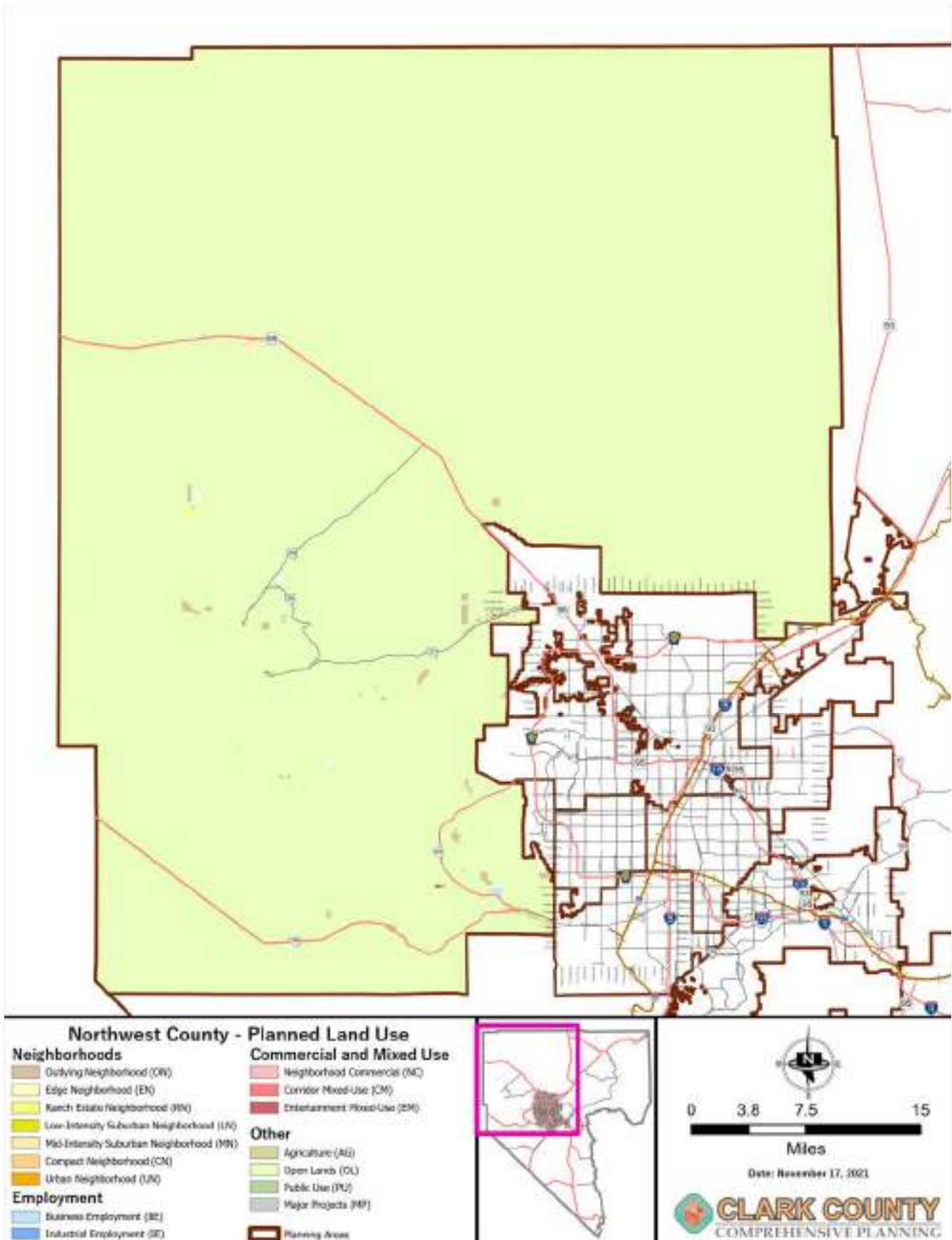


History of the Northwest County Planning Area

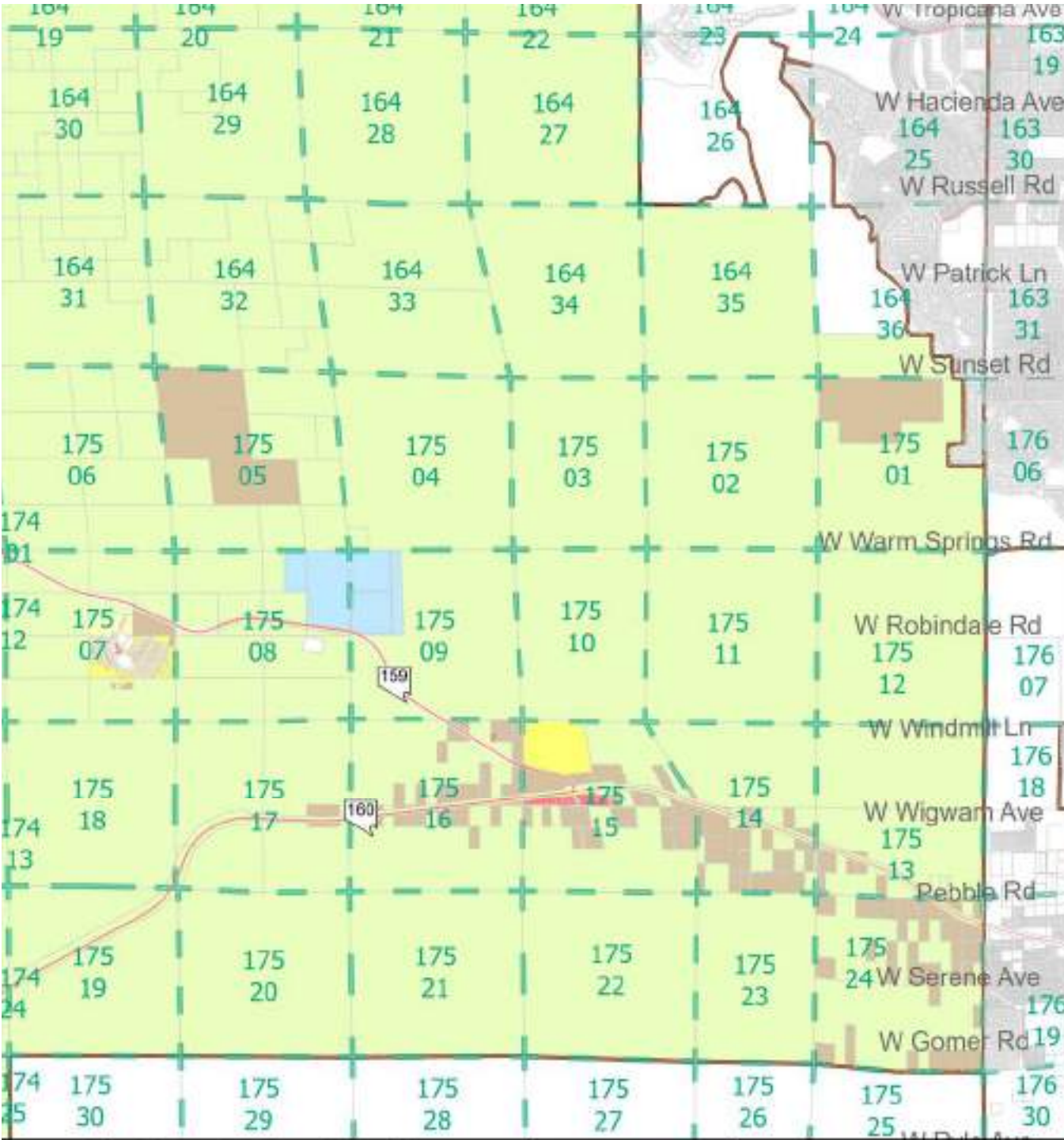
Indian Springs and Corn Creek were stations along the Las Vegas and Tonopah Railroad, which connected the Rhyolite Gold Fields with the communities of Tonopah and Las Vegas. Blue Diamond was originally built in 1941 by the Blue Diamond Mining Company to house workers. Many of the original structures remain in excellent condition.

The Northwest County planning area is defined by three historic periods: 1) the early pioneer days of the Old Spanish Trail/Mormon Road in the late 1800's; 2) the building of the Las Vegas and Tonopah Railroad in the early 1900's; and 3) the work of both the Civilian Conservation Corps (CCC) and the Works Progress Administration (WPA) during the Great Depression. The track bed of the railroad is still visible from along U.S. Highway 95.

Northwest County Planned Land Use Map



Blue Diamond Planned Land Use Map

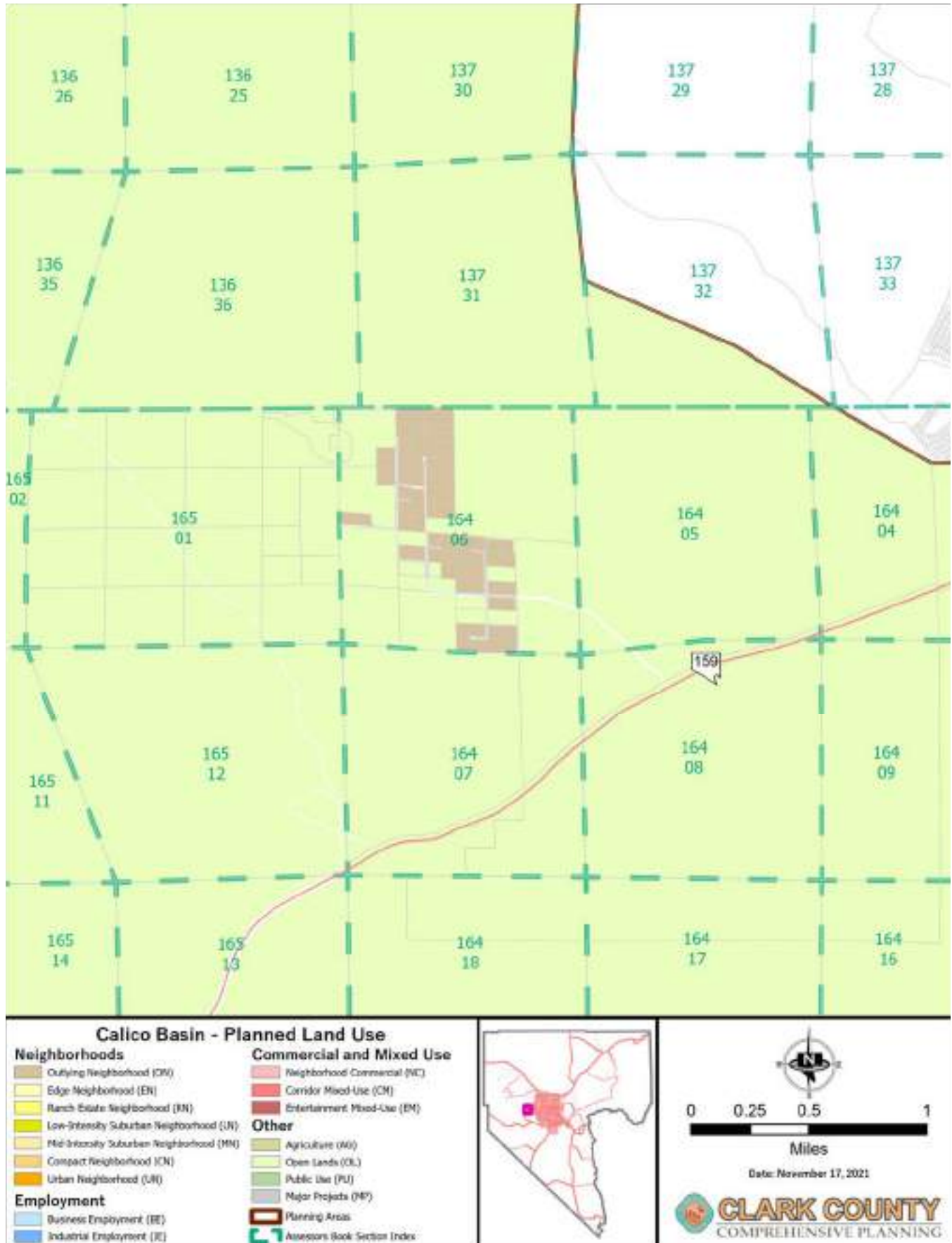


Blue Diamond - Planned Land Use	
Neighborhoods Outlying Neighborhood (ON) Edge Neighborhood (EN) Ranch Estate Neighborhood (REN) Low-Intensity Suburban Neighborhood (LUN) Mid-Intensity Suburban Neighborhood (MIN) Compact Neighborhood (CN) Urban Neighborhood (UN)	Commercial and Mixed Use Neighborhood Commercial (NC) Corridor Mixed-Use (CM) Entertainment Mixed-Use (EM)
Employment Business Employment (BE) Industrial Employment (IE)	Other Agriculture (AG) Open Lands (OL) Public Use (PU) Major Projects (MP) Planning Areas

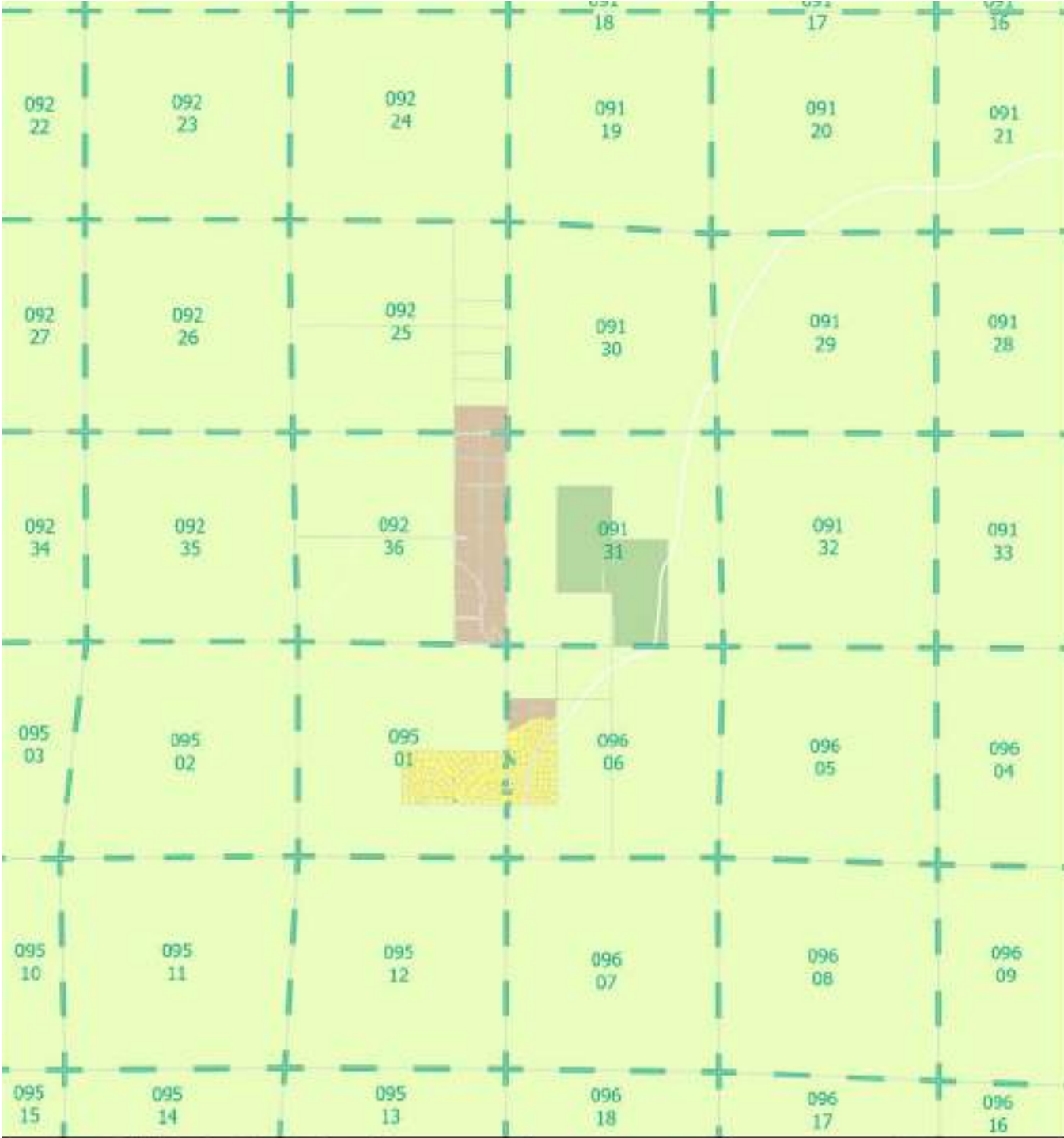
Miles

Date: November 17, 2021

Calico Basin Planned Land Use Map




Cold Creek Planned Land Use Map



Cold Creek - Planned Land Use

- | | |
|--|---|
| <p>Neighborhoods</p> <ul style="list-style-type: none"> Outlying Neighborhood (ON) Edge Neighborhood (EN) Ranch Estate Neighborhood (REN) Low-Intensity Suburban Neighborhood (LISN) Mid-Intensity Suburban Neighborhood (MISN) Compact Neighborhood (CN) Urban Neighborhood (UN) <p>Employment</p> <ul style="list-style-type: none"> Business Employment (BE) Industrial Employment (IE) | <p>Commercial and Mixed Use</p> <ul style="list-style-type: none"> Neighborhood Commercial (NC) Corridor Mixed-Use (CMU) Entertainment Mixed-Use (EM) <p>Other</p> <ul style="list-style-type: none"> Agriculture (AG) Open Lands (OL) Public Use (PU) Major Projects (MP) Planning Areas Assessor's Book Section Index |
|--|---|






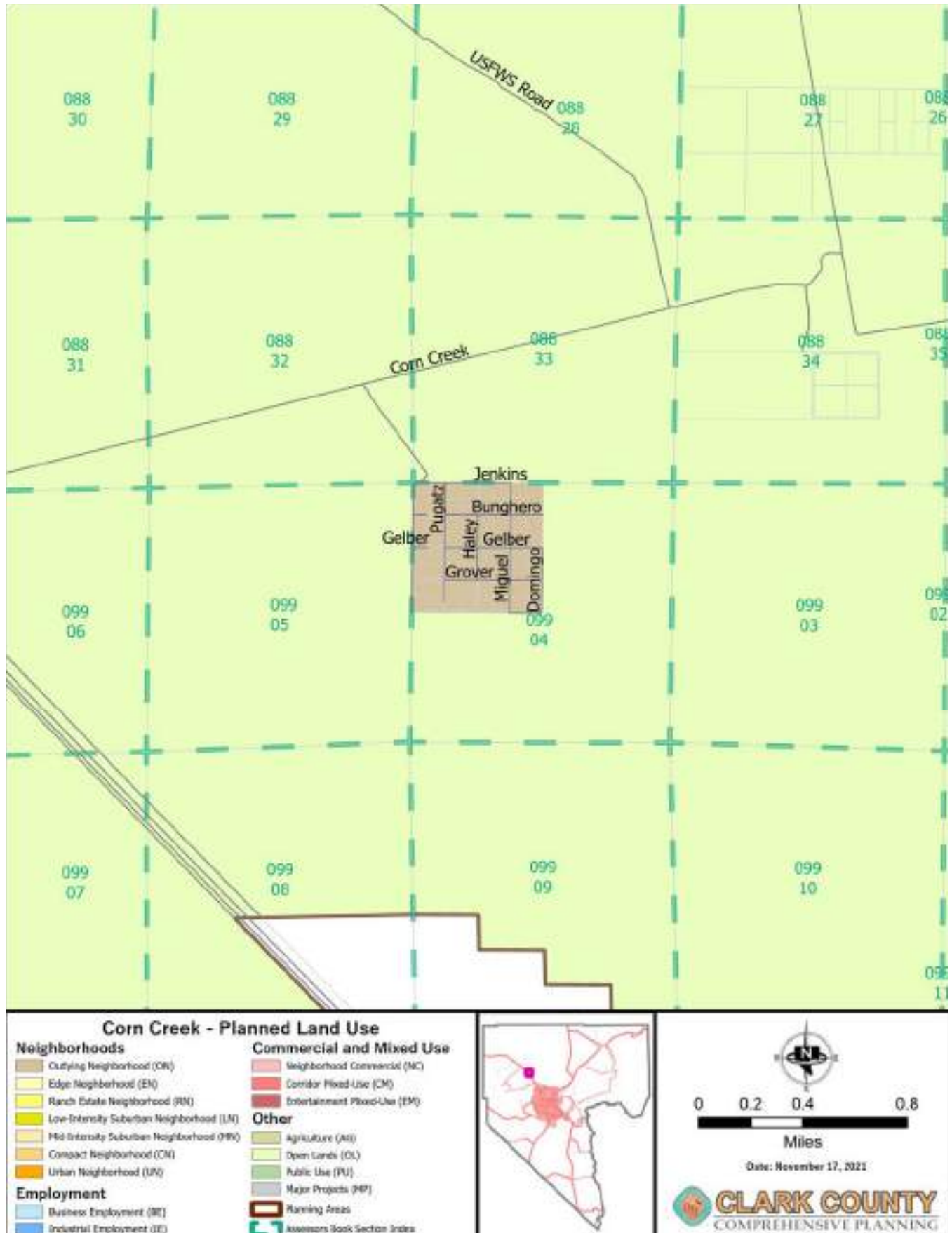
0 0.3 0.6 1.2

Miles

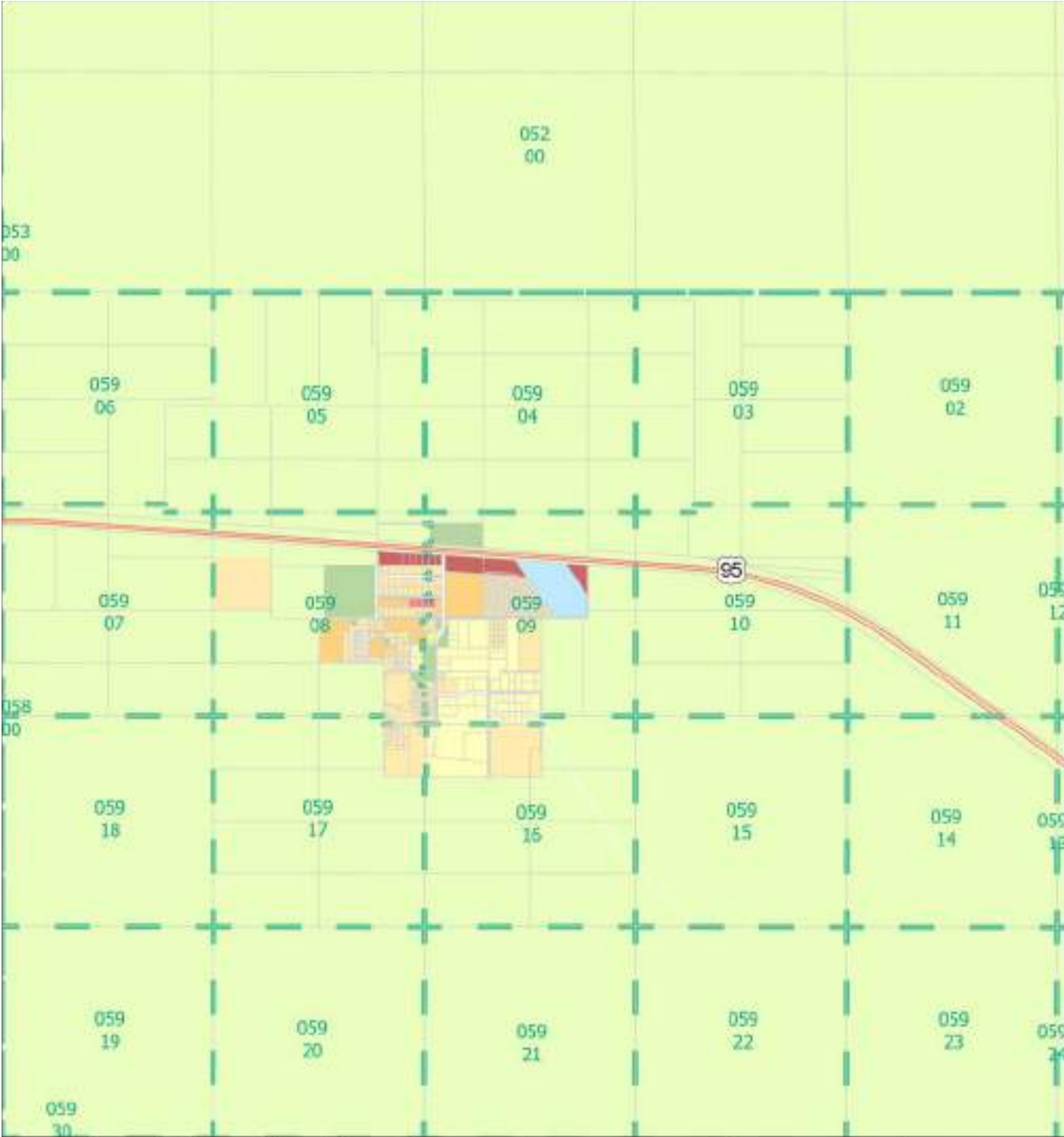
Date: November 17, 2021



Corn Creek Planned Land Use Map



Indian Springs Planned Land Use Map

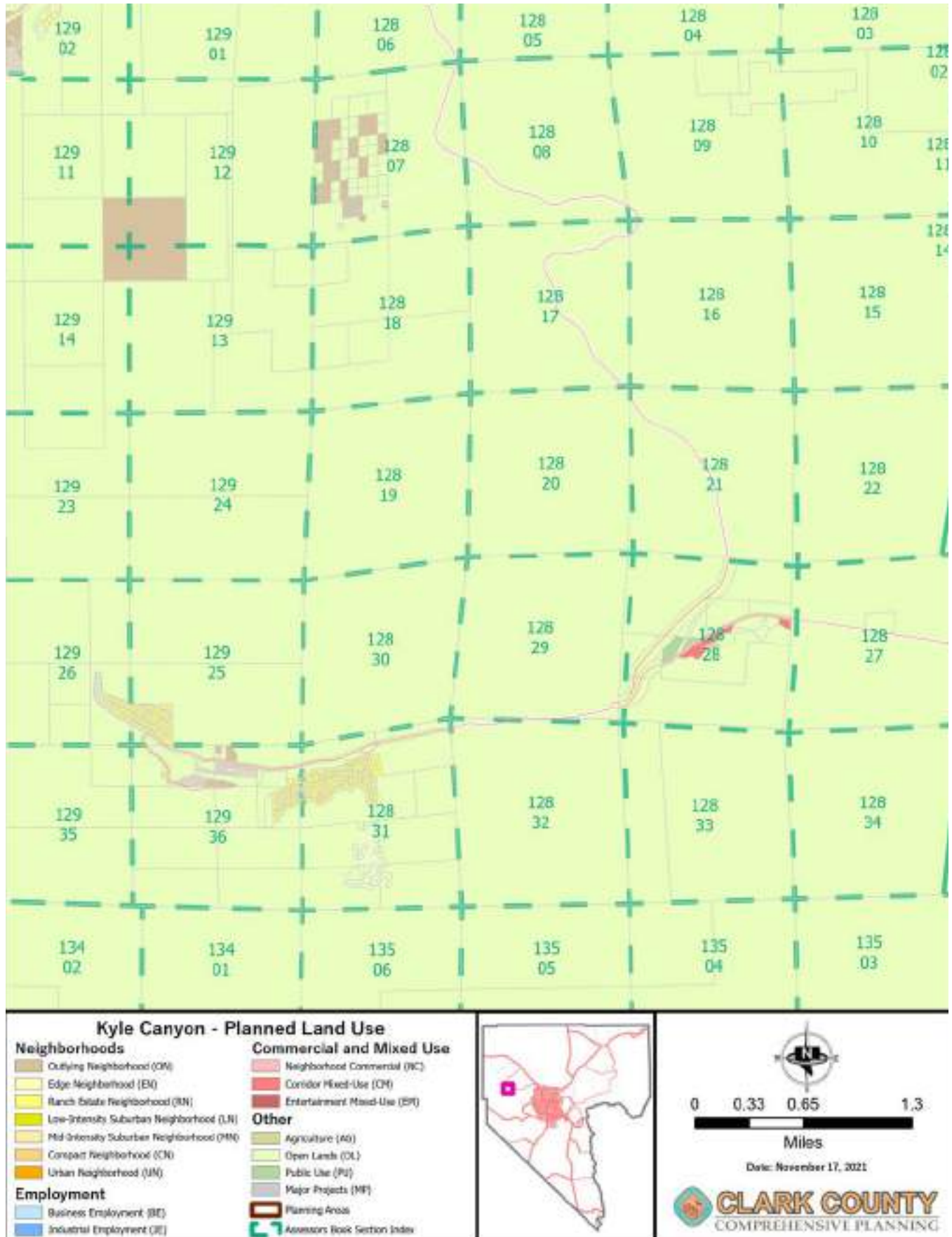


Indian Springs - Planned Land Use	
<p>Neighborhoods</p> <ul style="list-style-type: none"> Outlying Neighborhood (ON) Edge Neighborhood (EM) Ranch Estate Neighborhood (REN) Low-Intensity Suburban Neighborhood (LIN) Mid-Intensity Suburban Neighborhood (MIN) Compact Neighborhood (CN) Urban Neighborhood (UN) <p>Employment</p> <ul style="list-style-type: none"> Business Employment (BE) Industrial Employment (IE) 	<p>Commercial and Mixed Use</p> <ul style="list-style-type: none"> Neighborhood Commercial (NC) Corridor Mixed-Use (CMU) Entertainment Mixed-Use (EMU) <p>Other</p> <ul style="list-style-type: none"> Agriculture (AG) Open Lands (OL) Public Use (PU) Major Projects (MP) Planning Areas Assessors Book Section Index

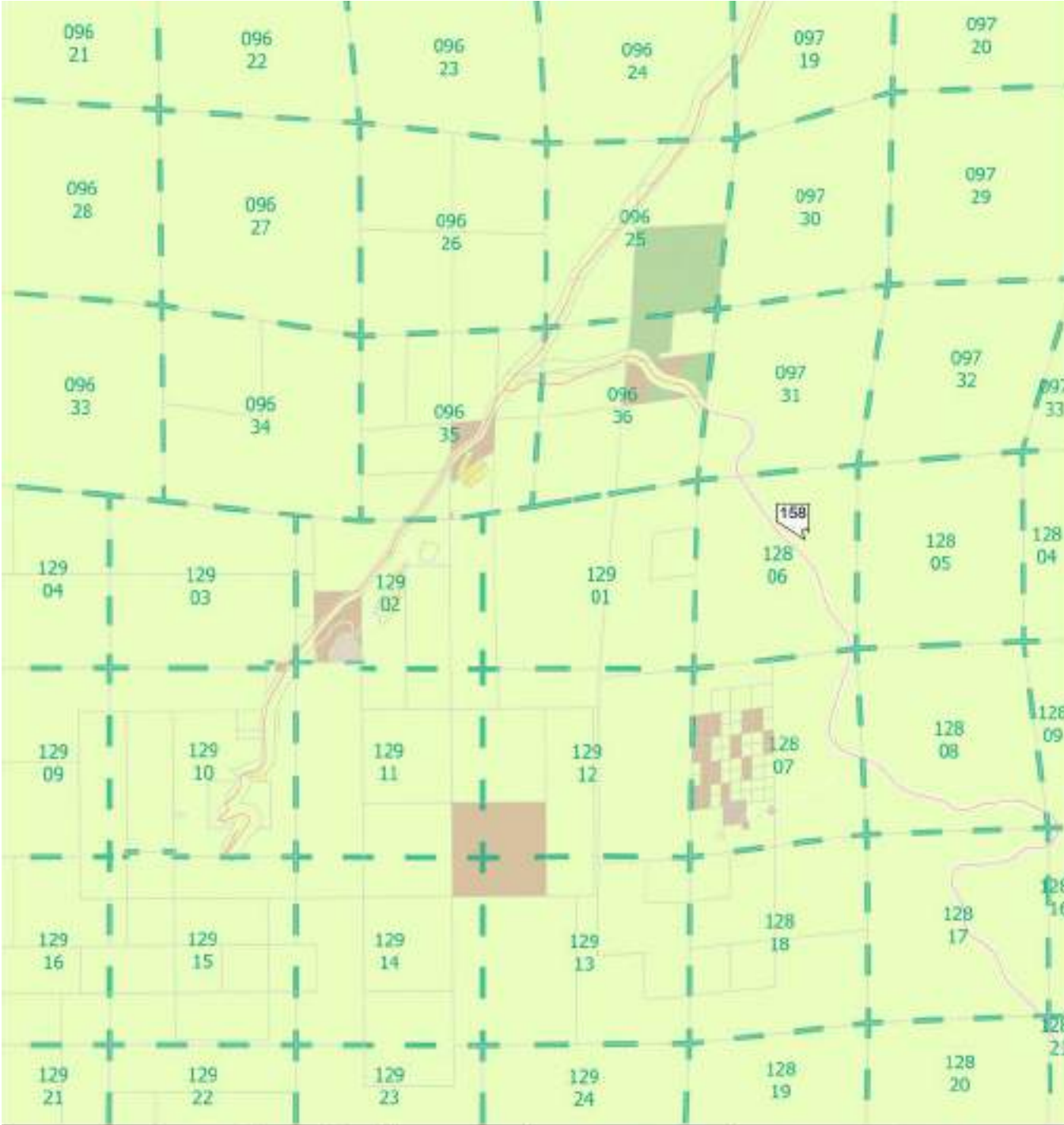
Date: November 17, 2021

CLARK COUNTY
COMPREHENSIVE PLANNING

Kyle Canyon Planned Land Use Map



Lee Canyon Planned Land Use Map



Lee Canyon - Planned Land Use

- | | |
|--|---|
| <p>Neighborhoods</p> <ul style="list-style-type: none"> Outlying Neighborhood (ON) Edge Neighborhood (EN) Ranch Estate Neighborhood (REN) Low-Intensity Suburban Neighborhood (LUN) Mid-Intensity Suburban Neighborhood (MUN) Compact Neighborhood (CN) Urban Neighborhood (UN) <p>Employment</p> <ul style="list-style-type: none"> Business Employment (BE) Industrial Employment (IE) | <p>Commercial and Mixed Use</p> <ul style="list-style-type: none"> Neighborhood Commercial (NC) Corridor Mixed-Use (CM) Entertainment Mixed-Use (EM) <p>Other</p> <ul style="list-style-type: none"> Agriculture (AG) Open Lands (OL) Public Use (PU) Major Projects (MP) Planning Areas Assessor's Book Section Index |
|--|---|





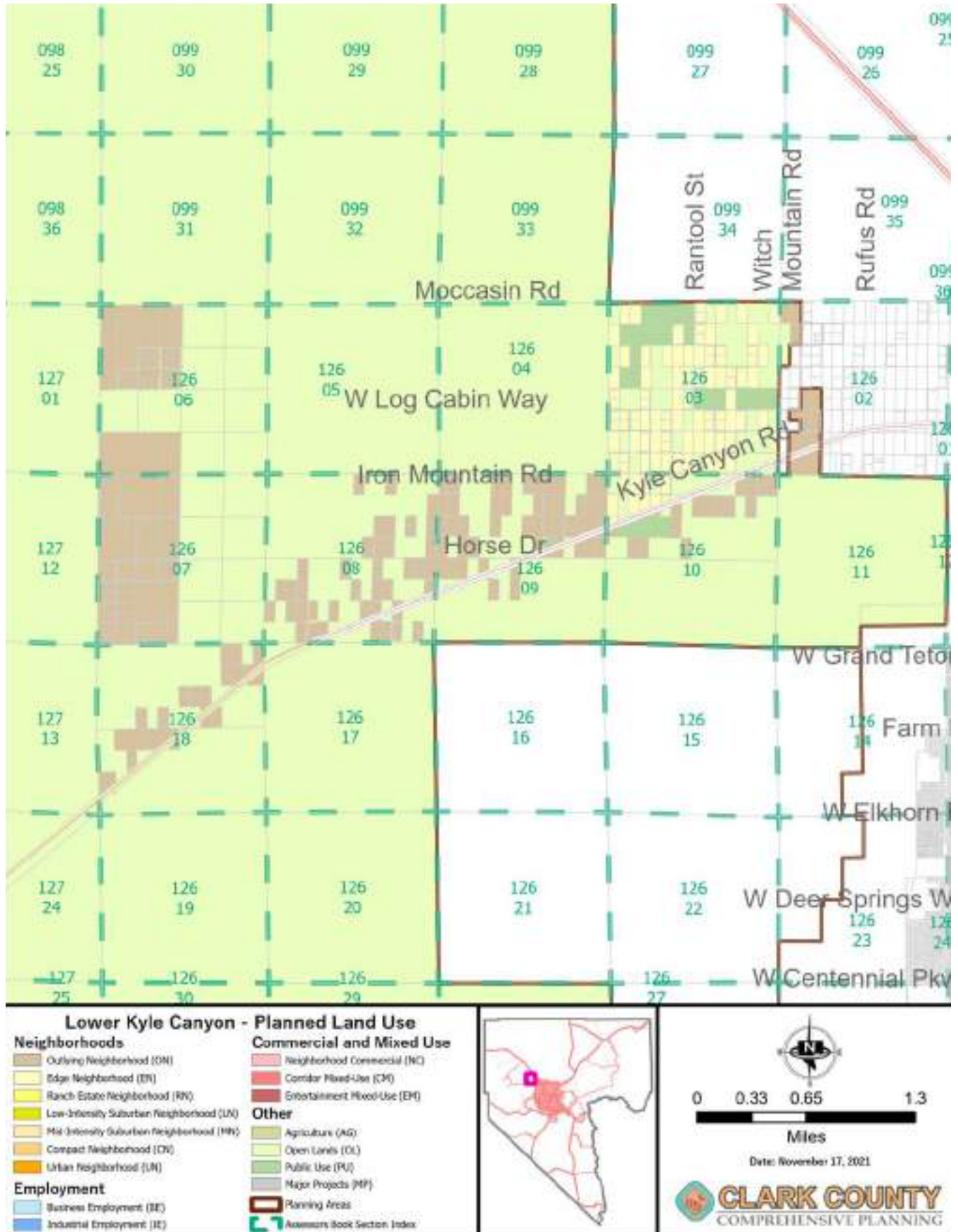
0 0.33 0.65 1.3

Miles

Date: September 27, 2021



Lower Kyle Canyon Planned Land Use Map



Mountain Springs Planned Land Use Map



Mountains Springs - Planned Land Use

- | | |
|--|--|
| <p>Neighborhoods</p> <ul style="list-style-type: none"> Outlying Neighborhood (ON) Edge Neighborhood (EN) Ranch Estate Neighborhood (REN) Low-Intensity Suburban Neighborhood (LUN) Mid-Intensity Suburban Neighborhood (MUN) Compact Neighborhood (CN) Urban Neighborhood (UN) <p>Employment</p> <ul style="list-style-type: none"> Business Employment (BE) Industrial Employment (IE) | <p>Commercial and Mixed Use</p> <ul style="list-style-type: none"> Neighborhood Commercial (NC) Corridor Mixed-Use (CM) Entertainment Mixed-Use (EM) <p>Other</p> <ul style="list-style-type: none"> Agriculture (AG) Open Lands (OL) Public Use (PU) Major Projects (MP) Planning Areas Assessor's Book Section Index |
|--|--|





0 0.17 0.35 0.7

Miles

Date: November 17, 2021



Northwest County Goals and Policies

Goal NW-1: Protect the distinct communities and landscapes found in Northwest County

POLICY NW-1.1: SCENIC BYWAYS

Limit future development along highways designated as Scenic Highways and Byways by Clark County or the state or federal government.

POLICY NW-1.2: MOUNT CHARLESTON

Maintain the rural alpine character of Mount Charleston by limiting future development in areas not served with a municipal water system, and minimizing impacts on the area's sensitive geology, hydrology, flora, and fauna.

POLICY NW-1.3: LOWER KYLE CANYON

Balance demand for future development along Kyle Canyon Road with the need to protect the scenic quality of this gateway to Mount Charleston and the Spring Mountains NRA.

POLICY NW-1.4: MOUNTAIN SPRINGS

Maintain the rural, alpine character of Mountain Springs.

POLICY NW-1.5: RED ROCK

Maintain the open, rural character of the Red Rock area, emphasizing the preservation of existing neighborhoods. Ensure growth in the community is consistent with severe groundwater limitations and limited private land availability.

POLICY NW-1.6: INDIAN SPRINGS

Facilitate limited expansion of essential services, such as childcare and non-emergency medical services. Concentrate more intensive uses on the western portion of the community, as water availability allows.

POLICY NW-1.7: RED ROCK CANYON VICINITY

Prohibit increases in density on land adjacent to the Red Rock Canyon National Conservation Area (NCA) in accordance with Title 30.

POLICY NW-1.8: COLD CREEK, CORN CREEK, AND TROUT CANYON

Ensure development is compatible with the established character of the communities of Cold Creek, Corn Creek, and Trout Canyon.

POLICY NW-1.9: CALICO BASIN AND LOWER KYLE CANYON

Encourage uses and activities in or adjacent to Calico Basin and Lower Kyle Canyon that protect the rural character and quiet setting of the community, the health of the natural environment, and the area's sensitive geology, hydrology, flora, and fauna. Discourage the development of lots smaller than 2 acres.

Goal NW-2: Adapt infrastructure and service levels by location, feasibility, and demand

POLICY NW-2.1: WATER AND WASTEWATER ACCESS

Promote connection to municipal water and wastewater service wherever available. Elsewhere, ensure septic systems, corrals, feed lots, and underground fuel tanks are installed a safe distance from drinking water wells to ensure protection of public health and water supplies.

POLICY NW-2.2: FIRE PROTECTION

Development within Northwest County should be limited to areas where adequate fire protection services exist or can be efficiently provided.

POLICY NW-2.3: FIRE DEPARTMENT SERVICE

Coordinate with the CCFD and volunteer fire departments to provide fire stations, mutual aid agreements, and sufficient water supply to support fire protection.

POLICY NW-2.4: CALICO BASIN WATER QUALITY

Coordinate with the Southern Nevada Health District (SNHD) and the CCWRD's Water Quality Team to monitor water quality in the Calico Basin and work to identify improved water supply.

POLICY NW-2.5: CALICO BASIN WATER SUPPLY

Limit the intensity of future development in the Calico Basin based on water supply constraints.

POLICY NW-2.6: COMMUNITY SERVICES AND AMENITIES

Encourage the maintenance and expansion of community services in Northwest County (i.e., parks, libraries, postal services). Seek opportunities to incorporate community gathering spaces as part of existing or planned public facilities, or through joint-use agreements.



Goal NW-3: Protect Northwest County's sensitive natural environment

POLICY NW-3.1: NIGHT SKY PROTECTION

Explore opportunities to protect the integrity of the night sky through programs and development standards that minimize glare and light trespass from exterior lighting and signage.

POLICY NW-3.2: DUST CONTROL

Explore development standards and enforcement techniques that stabilize roads, parking areas, and minimize disturbance of undeveloped land to reduce dust particulates and improve air quality, while maintaining the non-urban character of roads in Northwest County.

POLICY NW-3.3: SURFACE WATER PROTECTION

Improve surface water quality by encouraging the use of BMP in landscaping and design for buffering, erosion, runoff control, and stormwater control. Consider the placement of regional stormwater placards in existing neighborhoods and new developments to improve awareness and dumping in drains.

POLICY NW-3.4: PUBLIC LANDS

Continue cooperation with U.S. Forest Service (USFS), U.S. Fish and Wildlife Service (FWS), and BLM to protect and preserve Spring Mountains NRA, Mount Charleston, Red Rock Canyon NCA, Desert NWR, and other sensitive public lands.

Goal NW-4: Minimize risks associated with natural hazards

POLICY NW-4.1: HAZARD PRONE AREAS

Limit development in areas with known geologic hazard areas, as identified in the HMP, such as landslide areas, washes, active or potentially active fault zones, rockslide areas, steep slopes, avalanche paths, and avalanche threat areas.

POLICY NW-4.2: WILDFIRE MITIGATION

Collaborate with the BLM, USFS, Nevada Division of Forestry (NDF), and other agency partners to educate landowners in the Wildland Urban Interface (WUI) about defensible space parameters, use of fire-resistant building materials, and other steps that can be taken by property owners to reduce wildfire risk. Increase awareness of the Community Wildfire Protection Plans (CWPPs) that exist for communities in Northwest County.

POLICY NW-4.3: FLOOD CONTROL

Coordinate efforts with the RFCD on controlling flooding in Indian Springs (including a diversion channel east of the community), and improving waterflow, reducing flood risk, and improving emergency egress in Blue Diamond.

POLICY NW-4.4: UTILITY RESILIENCE

Encourage the adaptation of rural utility systems to enhance reliability through the use of renewable-powered microgrids and other emerging technologies.



Goal NW-5: Improve multimodal connectivity and safety for residents and visitors

POLICY NW-5.1: NON-URBAN STREET STANDARDS

Implement non-urban street standards—surface, rights-of-way, and cross-section—to ensure necessary facilities or infrastructure are considered and alternative modes and equestrian users can be safely accommodated.

POLICY NW-5.2: TRAIL AND OPEN SPACE ACCESS

Prioritize the completion of planned trail segments that will connect new development to existing and trails or open space. Discourage vacating streets that are adjacent to or connect with existing and planned trails or open space. To the maximum extent feasible, locate new trailheads and parking areas in locations that are not accessed through residential neighborhoods.[See also, Countywide Goal 2.1, *Continue to expand the County’s parks, trails, and open space system at a level that is sustainable*, and associated policies]

POLICY NW-5.3: RECREATION TRAFFIC SAFETY

Explore safety improvements to highways and major roads at trailheads, picnic areas, campgrounds, and other heavily visited areas to ensure the safety of all road users—including pedestrians and bicyclists.

POLICY NW-5.4: ACCESS CONTROL

Limit direct access from new development to U.S. Highway 95 and other major roads where possible by encouraging the development of shared driveways, frontage roads, and other measures in coordination with Clark County Public Works (CCPW).

POLICY NW-5.5: TRANSPORTATION ALTERNATIVES

Explore infrastructure improvements, shuttle systems, parking management, and other transportation demand management solutions to address commercial and recreational traffic, parking limitations, and accessibility to highly trafficked public lands.

POLICY NW-5.6: EQUESTRIAN TRAILS

Encourage the integration of equestrian trails in large lot developments with existing and proposed equestrian and multiple use trail systems, open space, and parks.

POLICY NW-5.7: MULTI-USE TRAILS

Balance the needs of varied user-groups on multi-use trails through the assignment of designated days or trail segments, or other strategies to maintain access while ensuring the comfort, safety, and enjoyment of all users.

Goal NW-6: Ensure development is compatible with the unique communities and environments of Northwest County

POLICY NW-6.1: CREECH AIR FORCE BASE

Encourage development patterns and standards compatible with the continuing operation of Creech Air Force Base and the AEO and AAO districts.

POLICY NW-6.2: CONTIGUOUS DEVELOPMENT

Promote contiguous development that is integrated into circulation systems, services, and facilities to ensure the efficient use of public services and facilities while minimizing costs of service extension and maintenance paid by the service provider and the County.